

ANDERSON CATTLE CO.



Bull & Female Sale

RED & BLACK ANGUS BULLS
Tuesday, March 29, 2022 1:00 PM
Swan River, MB



**BRUCE, IONE, BREANNA,
AUSTEN, KATIE & FINLEY
ANDERSON**

**Comp 2 RR 2
Swan River, MB R0L 1Z0
204-734-2073
andersoncattle@inethome.ca**



We are very excited about our front cover. It is a drawing Austen did for the Canadian Junior Angus Association fundraising auction at the Showdown in Lindsay, Ontario. The technique he used is called "reverse light" in which he grates graphite onto a blank page to create the black or darkness. With an eraser he draws or removes the "black" to release the "light" and create the image. It is amazing to watch him create these pictures.

Welcome to our 13th Annual Bull sale. This year will feature new AI/ET genetics in Red NCJ Coming in Hot 24E, Red U-2 Foreigner 413B, Red Hall's Barry 40C. We also have a very impressive set of bull calves sired by Red ACC Nozeka 81G that was our high selling bull to Wraz Red Angus is 2019 and his brother Red ACC Nozeka 98G. Our new black angus genetics include Paintrock Trapper, ACC Stunner 14G and ACC Buckaroo 39G. The offering is deep in quality and variety and includes many popular sire groups such as Big Shot, Chisum, Cannon Fire, Gold Buckle, Stirling, Momentum and Duplicate.

This year the bulls were fed a balanced TMR growing ration of ground hay, straw, corn silage, rolled barley and a custom formulated mineral. The bulls are very athletic and have been wintered in large paddocks to ensure they get plenty of exercise. They will go straight to work and walk your pastures with ease. All of the cattle are familiar with both horses and dogs. We work with the bulls daily and we value the good dispositions in our breeding lines.

We were excited to be able to attend some shows again in 2021. Lots 1,2 and 11 were part of our pen of bulls that was Champion Pen of Bulls at Harvest Showdown. We took this pen of bulls to Agribition as well and received many compliments on them. Brian Blyth and ABC Cattle Co allowed us to show our high selling bull from the 2021 sale Red ACC Redbox 119H at Agribition. He got a lot of positive attention and compliments, and we are very excited about the calves that we have out of him already and possibly showing him again this fall.

2021 was a challenging year but we pulled through, baling extra acres, cross fencing everything and weaning early to save grass. We were fortunate to put up enough feed and didn't have to sell any breeding stock. Breanna has been busy with Beef Smart growing the business and gaining new clients. She has shown to be an invaluable asset to their business as she is to ours. We value her knowledge on a daily basis and she has been a tremendous help in formulating our rations. We believe the cows have to work for a living, just like the rest of us. This year the cow herd spent November and December corn grazing before getting moved onto a TMR ration which is mostly ground straw and some corn silage.

Austen and Katie have been kept busy with Finley who will be just over 14 months at the time of our bull sale. Their house is full of love and baby giggles and Grandpa, Grandma, Nanna and Gedo are happy to babysit at anytime.

Breanna and Wade Sentes have recently been engaged and we are thrilled to be hosting a wedding this summer. They are living in Raymore and come up to Swan River often to help on the farm and spend time at the lake. Wade and Breanna helped picture all the yearling bulls in this catalog.

T Bar C is once again managing the sale. We have complete confidence they will assist you with your requests. You are welcome to stop by the farm any time prior to the sale to view the cattle. If we can help you select your next herd sire please don't hesitate to call. Hope to see you March 29th!

Sincerely,

**Bruce, Ione & Breanna
Austen, Katie & Finley Anderson**

FROM THE DESK AT T BAR...

Sale Managed By:



Box 2330
Warman, SK S0K 4S0
Ph: 306-933-4200
info@tbarc.com

Welcome to the Anderson Cattle Co. Red and Black Angus Bull and Female Sale, Tuesday, March 29, 2022, at the ranch, Swan River Manitoba. This is their 13th annual event, and we hope that you are not superstitious as this is a great set of bulls. Anderson Cattle Co. has been the source of high-quality sires for generations and the tradition continues.

What a great set of red and black bulls for your sire needs. The offering features the grand champion pen of bulls from Harvest Showdown and their stout trio was very popular and positive at Canadian Western Agribition. The red bulls are headlined by the sons of NCJ Coming Hot, an out-cross sire who is backed up by ACC Nozeka, their complete package breeding sire.

The blacks are headed by ACC Stunner and the A.I. sire Paintrock Trapper... sires that are calving friendly and built-in performance. Don't overlook the two-year-old bulls that fill out the offering... they will add pounds at weaning and cover more cows doing so.

The commercial cow /calf pairs will give producers large and small the opportunity to add to their inventory in a depleted national cow herd. Ideal for those who are starting or want to fill their replacement pastures.

Whether you are a breeder looking for that next outcross sire or a rancher looking for a new added value herd bull, plan to stop by the ranch at Swan River and preview the bulls and take a peak at the mothers or give Bruce or Austin a call and discuss the bulls in their offering. They will give you a straight opinion.

Plan to be with us in Swan River on March 29th for your Red and Black Angus needs whether it be with us in person, online or on the phone. We have graded the entire offering so feel free to give any of the T Bar C Team a call and we will be pleased to assist you in a professional and confidential manner with your selections.

- Chris Poley



**Chris Poley
306-220-5006**



**Shane Michelson
403-363-9973**



**Ben Wright
519-374-3335**

Anderson Cattle Co. Bull Sale

Tuesday, March 29, 2022 - 1:00 PM
Please join us for Lunch at 12:00 noon
At the farm, Swan River, MB

SALE DAY PHONES:

Sale Day 204-734-2073
 Bruce: 204-281-0851
 Austen: 204-281-3560
 Ione: 204-734-0730
 Breanna: 306-250-6344
 Katie: 204-281-0370
 Justin Logeot: 204-264-0212

AUCTIONEER:

Chris Poley: 306-220-5006

SALE STAFF:

T Bar C Cattle Co. Ltd.

Shane Michelson: 403-363-9973
 Ben Wright: 519-374-3335

BUYER REPRESENTATIVES:

Darryl Logeot: 204-522-0933

INSURANCE:

Keystone Livestock Services

Lois McRae: 204-573-5192

WATCH FOR THE SIGNS!

**From Swan River: 5 miles South Hwy 83 & 486,
 2 miles East Hwy 485, 1 mile South**

**From Kenville: 2 miles East, 2 miles North Hwy
 486, 2 miles East Hwy 485, 1 mile South**

**From Minitonas: 8 miles West Hwy 10 turn at
 Eisner Auction Sales, 5 miles South on Hwy 488,
 2 miles West Hwy 485, 1 mile South**



You're invited

OPEN HOUSE

1pm - 5pm

MARCH 19 AND 20, 2022

We invite you to join us to view the sale offering, enjoy some hospital-ity and fellowship. All Sale bulls will be on display, dams of sale bulls will be available as well as commercial females that are for sale. We strongly encourage buyers to preview the bulls either during this open house or at any other time of their convenience. Coffee is always on.

Calving Ease: The bulls have been rated considering birthweight, body structure, calving history or sire and dam



Scrotal measurements and current weights will be available at the sale.

Anderson Cattle Company Inc. uses Canadian Angus Performance Program (CAPP) whole herd reporting and performance data is printed in the catalogue.

SIGHT UNSEEN PURCHASE PLAN— Call us to discuss your specific needs. Your satisfaction guaranteed.

Join us for Lunch at 12 Noon.

Can't make it to the sale? Watch & Bid Online.

With DLMS you can Watch, Listen & Bid on your computer just like you were there with online bidding over the internet

Instructions for Viewing And Bidding At the Sale

Visit www.dlms.ca, Fill out the registration form located under registration and sign-up for your free user account to select a username and password.

BIDDERS - To be approved as a bidder, Log in and click BUYER APPROVAL tab, select the sale you are interested in bidding at and click sign up.

For more information or for help getting approved Call:

Mark Shologan - 780-699-5082 or DLMS Purebred Team 780.991-3025



To find an agent or sale near you today

visit www.dlms.ca

Purebred Sales • Daily Presort Sales

Direct Off-farm Sales every Thursdays at 10:00 am

2022 BREED AVERAGES

Red Angus					
BW	WW	YW	MCE	Milk	SC
1.1	39	66	5.3	23	0.65
Black Angus					
BW	WW	YW	MCE	Milk	SC
2.0	51	89	6.8	22	0.81



SPARTICUS 140J

1

RED ACC *Sparticus* 140J

Sale Feature

2231222

ACCI 140J

15/02/2021

RRA AVIATOR 507
RED NCJ COMING IN HOT 24E
RED NCJ MINERVA 35C

MUSGRAVE AVIATOR
RED RRA RACHEL 246
RED NCJ LAZY MC VENOM 34Z
RED NCJ MINERVA 13S

ANDERSON'S NEXT GENERATION 20U
RED ACC TIBBIE 13B
RED ANDERSON'S REVA 41T

ANDERSON'S WHO'S NEXT 39S
RED ANDERSON'S CADILINA 78S
RED ANDERSON'S CURVE BENDER 10R
ANDERSON'S TIBBIE 45J

BW: 89 lbs Adj. WW: 696 lbs Adj. YW: 1183 lbs

EPDs	CE	BW	WW	YW	MCE	Milk
6	1.1	46	87	7	26	

Only one bull can be lot 1 each year and Red ACC Sparticus 140J has been a front runner all year. He was part of the Grand Champion Pen of Bulls at Harvest Showdown. He was front and center at our Yards display at Agribition where he captivated visitors with his look at me now attitude and style. He leads the Coming in Hot progeny in muscle expression and base width. He has great feet, really good hang in his testicular development and is super docile. This bull will add quality, eye appeal and square up to a lot of bloodlines.



RED NCJ COMING IN HOT 24E | Sire of Lots 1 - 7



RED ACC TIBBIE 13B | Dam of Lots 1 - 7

2

RED ACC Slide 92J

2228988

ACCI 92J

02/02/2021

RRA AVIATOR 507
RED NCJ COMING IN HOT 24E
RED NCJ MINERVA 35C

MUSGRAVE AVIATOR
RED RRA RACHEL 246
RED NCJ LAZY MC VENOM 34Z
RED NCJ MINERVA 13S

ANDERSON'S NEXT GENERATION 20U
RED ACC TIBBIE 13B
RED ANDERSON'S REVA 41T

ANDERSON'S WHO'S NEXT 39S
RED ANDERSON'S CADILINA 78S
RED ANDERSON'S CURVE BENDER 10R
ANDERSON'S TIBBIE 45J

BW: 94 lbs Adj. WW: 718 lbs Adj. YW: 1210 lbs

EPDs	CE	BW	WW	YW	MCE	Milk
2.5	3.3	52	95	5	27	

Red ACC Slide 92J was part of our Pen of Bulls because he paired so well with 140J. These two bulls are peas in a pod. Red NCJ Coming in Hot semen was selling for \$450 a straw at Red Round Up in 2019 and is still trading for over \$200 a straw. We liked this bull because he goes back to a black sire Musgrave Aviator which makes for an interesting pedigree when paired with Tibbie 13B who has plenty of Black Genetics in her pedigree.



SLIDE 92J



117H | Maternal Brother of Lots 1 - 7



119H | Maternal Brother of Lots 1 - 7

Red ACC Volcanic was one of Chris's favourite red bulls. He is deep and soggy middled and super square made. He struts around the pen because he knows he's all that and a bag of chips. Lot 3-5 are really similar in build, and it would be really neat to load them up in the trailer and drop off in one yard. Imagine the calf crop you could get turning these three boys out with 75 females this year and 100+ females next year. The consistency and quality in that resulting calf crop would be incredible.



VOLCANIC 156J

3

RED ACC Volcanic 156J

2231223

ACCI 156J

18/02/2021

RRA AVIATOR 507
RED NCJ COMING IN HOT 24E
RED NCJ MINERVA 35C

MUSGRAVE AVIATOR
RED RRA RACHEL 246
RED NCJ LAZY MC VENOM 34Z
RED NCJ MINERVA 13S

ANDERSON'S NEXT GENERATION 20U
RED ACC TIBBIE 13B
RED ANDERSON'S REVA 41T

ANDERSON'S WHO'S NEXT 39S
RED ANDERSON'S CADILINA 78S
RED ANDERSON'S CURVE BENDER 10R
ANDERSON'S TIBBIE 45J

BW: 86 lbs Adj. WW: 754 lbs Adj. YW: 1298 lbs

EPDs	CE	BW	WW	YW	MCE	Milk
2.5	1.8	49	90	5	27	

Sale Feature



SCORCHED 153J

4 RED ACC *Scorched* 153J

2231225

ACCI 153J

18/01/2021

RRA AVIATOR 507
RED NCJ COMING IN HOT 24E
RED NCJ MINERVA 35C

ANDERSON'S NEXT GENERATION 20U
RED ACC TIBBIE 13B
RED ANDERSON'S REVA 41T

MUSGRAVE AVIATOR
RED RRA RACHEL 24E
RED NCJ LAZY MC VENOM 34Z
RED NCJ MINERVA 13S

ANDERSON'S WHO'S NEXT 39S
RED ANDERSON'S CADILINA 78S
RED ANDERSONS CURVE BENDER 10R
ANDERSON'S TIBBIE 45J

BW: 86 lbs Adj. WW: 652 lbs Adj. YW: 1247 lbs

EPDs	CE	BW	WW	YW	MCE	Milk
2.5	1.6	49	90	5	27	

RED ACC Scorched 153J has a little more frame and depth of body than lot 1 & 2 with a 86 lb birth weight. He is going to add some rib and length in his progeny. Daughters out of Lot 1-7 will be highly sought after if they are anything like Tibbie 13B. We sent Tibbie off to Bova Tech to get flushed because we wanted as many daughters out of her as we could. So far she is off to a great start with this Coming in Hot Flush garnering 42 freezable embryos. She did several more flushes between 15-25 embryos to bulls such as Red Box 55C, Red Blood 18114 and Red Wood 1941.



JALEPENO 150J

5 RED ACC *Jalepeno* 150J

2231224

ACCI 150J

18/01/2021

RRA AVIATOR 507
RED NCJ COMING IN HOT 24E
RED NCJ MINERVA 35C

ANDERSON'S NEXT GENERATION 20U
RED ACC TIBBIE 13B
RED ANDERSON'S REVA 41T

MUSGRAVE AVIATOR
RED RRA RACHEL 24E
RED NCJ LAZY MC VENOM 34Z
RED NCJ MINERVA 13S

ANDERSON'S WHO'S NEXT 39S
RED ANDERSON'S CADILINA 78S
RED ANDERSONS CURVE BENDER 10R
ANDERSON'S TIBBIE 45J

BW: 88 lbs Adj. WW: 656 lbs Adj. YW: 1133 lbs

EPDs	CE	BW	WW	YW	MCE	Milk
2.5	1.5	49	90	5	27	

RED ACC Jalepeno 150J is Justin's favourite Coming in Hot bull in the pen. He is really similar to Lot 3 & 4 in his build. We have 8 maternal sisters that calved this year and they are making great mommas with tremendous udder quality and mothering instincts.



FARENHEIGHT 117J

6 RED ACC *Farenheight* 117J

2231220

ACCI 117J

10/02/2021

RRA AVIATOR 507
RED NCJ COMING IN HOT 24E
RED NCJ MINERVA 35C

ANDERSON'S NEXT GENERATION 20U
RED ACC TIBBIE 13B
RED ANDERSON'S REVA 41T

MUSGRAVE AVIATOR
RED RRA RACHEL 24E
RED NCJ LAZY MC VENOM 34Z
RED NCJ MINERVA 13S

ANDERSON'S WHO'S NEXT 39S
RED ANDERSON'S CADILINA 78S
RED ANDERSONS CURVE BENDER 10R
ANDERSON'S TIBBIE 45J

BW: 93 lbs Adj. WW: 751 lbs Adj. YW: 1352 lbs

EPDs	CE	BW	WW	YW	MCE	Milk
2.5	2.8	51	93	5	27	

RED ACC Farenheight 117J has a maternal brother 117H that was a sale feature last year and went down to Ross North Dakota with a couple more bulls to work at Gene Browns Ranch.



Swan River Valley Agricultural Society Donation Beef Raffle

We are donating an entire beef to be raffled off with the proceeds of the fundraiser benefiting the Swan River Valley Agricultural Society. The SRVAG promotes Agriculture in our community and hosts the Northwest Round Up and Exhibition. This three day rodeo and fair is one of the most important events in our community the last weekend in July. It provides a great fundraising opportunity for many service groups in our town, provides entertainment and educates youth about Agriculture. The first \$10 tickets for this fundraiser will be auctioned off by Dutch Auction at our sale. You can bid on them online or contact one of us and we can look after your bid during the auction. Last year we donated a beef to the local CT Scanner project and it raised \$15,000.

7**RED ACC *The Brand* 119J****2231219 ACCI 119J 10/02/2021**

RRA AVIATOR 507
 RED NCJ COMING IN HOT 24E
 RED NCJ MINERVA 35C

MUSGRAVE AVIATOR
 RED RRA RACHEL 246
 RED NCJ LAZY MC VENOM 34Z
 RED NCJ MINERVA 13S

ANDERSON'S NEXT GENERATION 20U
 RED ACC TIBBIE 13B
 RED ANDERSON'S REVA 41T

ANDERSON'S WHO'S NEXT 39S
 RED ANDERSON'S CADILINA 78S
 RED ANDERSON'S CURVE BENDER 10R
 ANDERSON'S TIBBIE 45J

BW: 85 lbs Adj. WW: 650 lbs Adj. YW: 1149 lbs

EPDs	CE	BW	WW	YW	MCE	Milk
2.5	1.6	49	90	5	27	

Brand 119J is a Maternal brother to Red ACC Redbox 119H that was purchased at our Sale by Brian Blyth. We showed him at Agribition as a Yearling and he was appreciated by many in the barns. We have several calves out of him now and they were born unassisted and look to be the most powerful calves in our 2022 calf crop.

**The Brand 119J****8****RED ACC *Rip* 2J****2210315 ACCI 2J 01/01/2021**

RED COCKBURN ASSASSIN 624D
 RED ACC ASSASSIN 167G
 RED ACC LAMBDA 1Z

RED SHILOH CANNON FIRE 8C
 RED ACC SIERRA 112G
 RED ACC SIERRA 18Z

RED PIE SPECIALIST
 RED COCKBURN CORA 254Z
 RED BAKERS WILD CARD 814W
 RED D-BAR LAMBDA 60X

RED ML HUSTLER 272Z
 RED SHILOH ARCH ANGEL 53A
 ANDERSON'S NEXT GENERATION 20U
 RED ANDERSON'S SIERRA 23S

BW: 80 lbs Adj. WW: 650 lbs Adj. YW: 1149 lbs

EPDs	CE	BW	WW	YW	MCE	Milk
0	2.2	37	61	5	27	

There is a bunch of bull calves named Rip out there this year and here is ours. His dam is so nice uddered we contemplated putting a halter on her and showing them as a pair. Rip is really strong topped and smooth made. He has the right build to be heifer friendly but enough length and performance to do well on cows also. His Grand dam has 8 registered progeny including one of our herd bulls and a female working at Nordall that they selected as a pick of our bred heifers in 2017.

**Rip 2J****9****RED ACC *Assassin* 108J****2223223 ACCI 108J 07/02/2021**

RED COCKBURN ASSASSIN 624D
 RED ACC ASSASSIN 167G
 RED ACC LAMBDA 1Z

RED ACC PACESETTER 158D
 RED ACC TIBBIE 181G
 RED ACC TIBBIE 149D

RED PIE SPECIALIST
 RED COCKBURN CORA 254Z
 RED BAKERS WILD CARD 814W
 RED D-BAR LAMBDA 60X

ACC PACESETTER 73B
 ACC CLAIRE 42A
 RED D-BAR DYNAMO 67Y
 RED ANDERSON'S TIBBIE 132X

BW: 92 lbs Adj. WW: 760 lbs Adj. YW: 1210 lbs

EPDs	CE	BW	WW	YW	MCE	Milk
-4	3.4	43	72	2	27	

Red ACC Assassin 108J has Tibbie 132X in his pedigree. This cow raised a herd bull for M&J Farms and the next year raised a sale feature that went to Nebraska.

**Assassin 108J**



TRAVELLER 25J



RED U-2 FOREIGNER 413B | Sire of Lots 10 & 11

10

RED ACC *Traveller 25J*

Sale Feature

2221368

ACCI 25J

17/01/2021

U2 T.K.0.254Z
RED U-2 FOREIGNER 413B
RED U-2 ANEXA 8026U

YOUNG DALE XCLUSIVE 25X
RED U-2 ANEXA 333N
RED U-2 BIG LEAGUE 544R
U-2 ANEXA 4042P

RED ACC PACESETTER 158D
RED ACC TIBBIE 174G
RED ACC TIBBIE 136D

ACC PACESETTER 73B
ACC CLAIRE 42A
RED D-BAR DYNAMO 67Y
RED ANDERSON'S TIBBIE 32Y



BW: 75 lbs Adj. WW: 775 lbs Adj. YW: 1279 lbs

EPDs	CE	BW	WW	YW	MCE	Milk
5	0.1	46	73	5	24	

Exciting new genetics here for us in the U-2 Foreigner line. 25J has the look that you can turn him out with heifers and your going to get some dam nice heavy calves in the fall. Foreigner 413B progeny averaged 78 lbs for males and 73 lbs for females on 561 registered progeny. That is some pretty consistent calving ease as he still has a +5 CED and a 0.0 BW EPD as a 7 year old bull.



Foreigner 90J

11

RED ACC *Foreigner 90J*

2223411

ACCI 90J

02/02/2021

U2 T.K.0.254Z
RED U-2 FOREIGNER 413B
RED U-2 ANEXA 8026U

YOUNG DALE XCLUSIVE 25X
RED U-2 ANEXA 333N
RED U-2 BIG LEAGUE 544R
U-2 ANEXA 4042P

RED ACC BIG SHOT 118E
RED ACC VALENTINE 1G
RED ANDERSON'S VALENTINE 41U

RED U-2 MAGNUM 227C
RED ACC LAMBDA 1Z
RED ANDERSON'S DUKE 5M
RED ANDERSON'S VALENTINE 12F



BW: 82 lbs Adj. WW: 739 lbs Adj. YW: 1246 lbs

EPDs	CE	BW	WW	YW	MCE	Milk
-1	1.9	51	84	4	24	

Calving ease and heifer approved, 90J is really moderate and easy fleshing. He will calve easier than his EPDs let on based on his design and skull shape. His granddam 41U has 13 progeny, is still sound and always calves early. Cows like that are the profitable kind.

12 RED ACC *Jimmy 3J*

2210317 ACCI 3J 03/01/2021

ACCORDING TO THE ACC NOZEKA 27C
 RED ACC NOZEKA 81G
 RED ACC TIBBIE 98B

RED SHILOH CANNON FIRE 8C
 RED ACC HEATHER 197G
 RED ANDERSON'S HEATHER 76T

YOUNG DALE NOZEKA 2Z
 ANDERSON'S TIBBIE 105W
 ACC TIGER 3Z
 RED ACC TIBBIE 89Z

RED ML HUSTLER 272Z
 RED SHILOH ARCH ANGEL 53A
 RED ANDERSONS CURVE BENDER 10R
 ANDERSON'S HEATHER 4H

BW: 78 lbs Adj. WW: 797 lbs Adj. YW: 1166 lbs

EPDs	CE	BW	WW	YW	MCE	Milk
	3	2.3	38	67	5	20

Jimmy is bigger framed performance bull with a strong maternal background. His Dam bred back really early despite being a late born heifer calf. His granddam is one of those favourite old cows that we really admire. 76T has 13 registered progeny, several sale bulls and 3 daughters in our herd.



Jimmy 3J

13 RED ACC *Yellowstone 30J*

2210333 ACCI 30J 18/01/2021

ACCORDING TO THE ACC NOZEKA 27C
 RED ACC NOZEKA 81G
 RED ACC TIBBIE 98B

RED COCKBURN ASSASSIN 624D
 RED ACC LAMBDA 161G
 RED ACC LAMBDA 1Z

YOUNG DALE NOZEKA 2Z
 ANDERSON'S TIBBIE 105W
 ACC TIGER 3Z
 RED ACC TIBBIE 89Z

RED PIE SPECIALIST 430
 RED COCKBURN CORA 254Z
 RED BAKERS WILD CARD 814W
 RED D-BAR LAMBDA 60X

BW: 86 lbs Adj. WW: 746 lbs Adj. YW: 1260 lbs

EPDs	CE	BW	WW	YW	MCE	Milk
	-1	2.9	45	79	1	22



Yellowstone is really complete dark red bull that I would fell confident using on heifers or cows. His dam 161G is out of our doner cow 1Z and Assassin 624D. Assassin and Nozeka are adding to the Calving Ease in his pedigree while 1Z brings the pounds and performance.



Yellowstone 30J

14 RED ACC *Nozeka 36J*

2210340 ACCI 36J 20/01/2021

ACCORDING TO THE ACC NOZEKA 27C
 RED ACC NOZEKA 81G
 RED ACC TIBBIE 98B

FRASER POKER FACE 613D
 RED CAMO GLORIA 22G
 RED WRAZ SOAPY 6D

YOUNG DALE NOZEKA 2Z
 ANDERSON'S TIBBIE 105W
 ACC TIGER 3Z
 RED ACC TIBBIE 89Z

VISION UNANIMOUS 1418
 RED HOWE DYNA QUEEN 241A
 RED BAK 58 BIG ROCK 121Y
 RED WRAZ SOAPY 201Z

BW: 70 lbs Adj. WW: 685 lbs Adj. YW: 1164 lbs

EPDs	CE	BW	WW	YW	MCE	Milk
	8	0.4	39	69	6	15



Nozeka 36J is one of the top red bulls in the sale for calving ease. We purchased his dam at the great Red Round Up sale as a heifer calf. This Pokerface daughter has turned into a really nice moderate female and is dark red just like 36J.



Nozeka 36J

Testimonial from Lynden Eggie with BWR Stock Farms
 We have bought bulls and females from ACC since our start in cattle. Tennaille and I have been happy with everything noticing year to year the improvement in our herd. The animals are just the half of dealing with ACC. Austen and family have been more then helpful with any questions we have or advice we may be looking for with checking in through out the year seeing how things are going which means a lot. So we would like to thank them all at ACC from BWR STOCK FARMS and look forward to doing business in the future.
 - Lynden, Tennaille and family



Valentine 78J



NOZEKA 4J

15 RED ACC *Valentine 78J*

2223208 ACCI 78J 28/01/2021

ACC NOZEKA 27C
RED ACC NOZEKA 81G
RED ACC TIBBIE 98B

RED ACC PACESETTER 158D
RED ACC VALENTINE 127G
RED ACC VALENTINE 52E

YOUNG DALE NOZEKA 2Z
ANDERSON'S TIBBIE 105W
ACC TIGER 3Z
RED ACC TIBBIE 89Z

ACC PACESETTER 73B
ACC CLAIRE 42A
RED BENCHMARK TRANSITION 10'14
RED ACC VALENTINE 134C

BW: 82 lbs Adj. WW: 727 lbs Adj. YW: 1195 lbs

EPDs	CE	BW	WW	YW	MCE	Milk
-3	3.6	39	71	-1	20	



16 RED ACC *Nozeka 4J*

2210316 ACCI 4J 03/01/2021

ACC NOZEKA 27C
RED ACC NOZEKA 98G
RED ACC TIBBIE 33Z

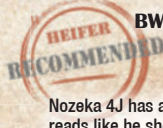
RED COCKBURN ASSASSIN 624D
RED ACC TIBBIE 25G
RED ACC TIBBIE 159E

YOUNG DALE NOZEKA 2Z
ANDERSON'S TIBBIE 105W
ANDERSON'S NEXT GENERATION 20U
RED ANDERSON'S CORA 36U

RED PIE SPECIALIST 430
RED COCKBURN CORA 254Z
ACC PACESETTER 73B
RED ACC TIBBIE 89Z

BW: 76 lbs Adj. WW: 829 lbs Adj. YW: 1315 lbs

EPDs	CE	BW	WW	YW	MCE	Milk
4	0.6	43	73	4	26	



Nozeka 4J has a little extra brisket up front compared to the other bulls but his pedigree still reads like he should calve really easily with a +4 Calving ease EPD. The Assassin and Pacesetter influence on the bottom side will make for really nice females.



NOZEKA 7J



NOZEKA 47J

17 RED ACC *Nozeka 7J*

2210319 ACCI 7J 08/01/2021

ACC NOZEKA 27C
RED ACC NOZEKA 98G
RED ACC TIBBIE 33Z

RED ACC BIG SHOT 118E
RED ACC BONNIE 7G
RED ACC BONNIE 121Z

YOUNG DALE NOZEKA 2Z
ANDERSON'S TIBBIE 105W
ANDERSON'S NEXT GENERATION 20U
RED ANDERSON'S CORA 36U

RED U-2 MAGNUM 227C
RED ACC LAMBDA 1Z
RED ANDERSON'S MR BEEF 06W
ANDERSON'S BONNIE 4U

BW: 88 lbs Adj. WW: 788 lbs Adj. YW: 1397 lbs

EPDs	CE	BW	WW	YW	MCE	Milk
-2	3.7	51	87	-1	26	

Recommended for Cows lots of growth and performance with Lot 17.

18 RED ACC *Nozeka 47J*

2210344 ACCI 47J 21/01/2021

ACC NOZEKA 27C
RED ACC NOZEKA 98G
RED ACC TIBBIE 33Z

ACC TIGER 3Z
RED ACC TIBBIE 98B
RED ACC TIBBIE 89Z

YOUNG DALE NOZEKA 2Z
ANDERSON'S TIBBIE 105W
ANDERSON'S NEXT GENERATION 20U
RED ANDERSON'S CORA 36U

HF TIGER 5T
ANDERSON'S REBA 70X
ANDERSON'S NEXT GENERATION 20U
RED ANDERSON'S SAM 51U

BW: 94 lbs Adj. WW: 754 lbs Adj. YW: 1381 lbs

EPDs	CE	BW	WW	YW	MCE	Milk
4	1.9	35	65	3	21	

Dam has raised 6 calves with 5 selling through the sale. Featured among these was Red ACC Nozeka 81G who is the sire of lots 12-14 and is owned by Wraz Red Angus. Her Bull calf last year sold to Dalven Sopol.

19 RED ACC *Nozeka* 51J

2210350 ACCI 51J 23/01/2021

ACC NOZEKA 27C
 RED ACC NOZEKA 98G
 RED ACC TIBBIE 33Z

RED BENCHMARK TRANSITION 10'14
 RED ACC TIBBIE 25E
 RED ACC TIBBIE 94C

YOUNG DALE NOZEKA 2Z
 ANDERSON'S TIBBIE 105W
 ANDERSON'S NEXT GENERATION 20U
 RED ANDERSON'S CORA 36U

RED LSF MEW GAME CHANGER 1613Y
 RED BENCHMARK LANA 60'11
 RED D-BAR DYNAMO 67Y
 RED ANDERSON'S TIBBIE 78T

BW: 94 lbs Adj. WW: 723 lbs Adj. YW: 1243 lbs

EPDs	CE	BW	WW	YW	MCE	Milk
	-3	3.1	43	78	-2	27

Nozeka 51J's Dams 2020 calf was our heaviest weaning heifer calf, we donated her to the Olds College to start their Red Angus herd. Her Granddam Tibbie 94C was Champion Senior Female at Manitoba Ag Ex in 2018 and is now a donor female.



Nozeka 51J

20 RED ACC *Nozeka* 106J

2223221 ACCI 106J 06/02/2021

ACC NOZEKA 27C
 RED ACC NOZEKA 98G
 RED ACC TIBBIE 33Z

RED WRAZ SWAYZE 146B
 RED ACC VALENTINE 175E
 RED ACC VALENTINE 129C

YOUNG DALE NOZEKA 2Z
 ANDERSON'S TIBBIE 105W
 ANDERSON'S NEXT GENERATION 20U
 RED ANDERSON'S CORA 36U

RED MOOSE CREEK SWAYZE 33Z
 RED WRAZ CUB MARIA 70X
 RED MCRAES MOHICAN 40X
 RED ANDERSON'S VALENTINE 69U

BW: 74 lbs Adj. WW: 650 lbs Adj. YW: 1065 lbs

EPDs	CE	BW	WW	YW	MCE	Milk
	7	-0.8	30	50	5	23



Nozeka 106J

21 RED ACC *Nozeka* 118J

2223229 ACCI 118J 10/02/2021

ACC NOZEKA 27C
 RED ACC NOZEKA 98G
 RED ACC TIBBIE 33Z

RED ACC DYNAMO 58B
 RED ACC BONNIE 123E
 RED ACC BONNIE 91C

YOUNG DALE NOZEKA 2Z
 ANDERSON'S TIBBIE 105W
 ANDERSON'S NEXT GENERATION 20U
 RED ANDERSON'S CORA 36U

RED D-BAR DYNAMO 67Y
 RED ANDERSON'S BONITA 90X
 ACC TIGER 3Z
 RED ACC BONNIE 17Z

BW: 96 lbs Adj. WW: 757 lbs Adj. YW: 1256 lbs

EPDs	CE	BW	WW	YW	MCE	Milk
	0	2.3	37	65	-2	24



Nozeka 118J

22 RED ACC *Nozeka* 126J

2223232 ACCI 126J 12/02/2021

ACC NOZEKA 27C
 RED ACC NOZEKA 98G
 RED ACC TIBBIE 33Z

RED SHILOH CANNON FIRE 8C
 RED ACC TIBBIE 127F
 ANDERSON'S TIBBIE 53Y

YOUNG DALE NOZEKA 2Z
 ANDERSON'S TIBBIE 105W
 ANDERSON'S NEXT GENERATION 20U
 RED ANDERSON'S CORA 36U

RED ML HUSTLER 272Z
 RED SHILOH ARCH ANGEL 53A
 ANDERSON'S NEXT GENERATION 20U
 RED ANDERSON'S TIBBIE 78T

BW: 85 lbs Adj. WW: 696 lbs Adj. YW: 1242 lbs

EPDs	CE	BW	WW	YW	MCE	Milk
	2	1.8	40	67	4	23



Nozeka 126J



Beck 17J



Barry 35J

23 RED ACC *Beck 17J*

RED HALL'S BARRY 040C | Sire of Lot 23

24 RED ACC *Barry 35J*

2223672 ACCI 17J 15/01/2021

RED NORTHLINE ROB ROY 122K
RED HALL'S BARRY 040C
RED BLAIRS ELORA 40X

RED WILD ROSE ROBIN HOOD 11F
RED BAR EL SYBIL 122E
RED WHEEL SIN CITY 43T
RED JCC ELORA 71P

RED BAR DOUBLE M CLASS 125R
RED NORDAL 98S ENVY 98X
RED CRESCENT CREEK MS ENVY 98S

BDM HOC 9N
BDM BEAUTY 3N
RED CRESCENT CREEK 52
RED SUN VALLEY PROSPECT 206

BW: 85 lbs Adj. WW: 682 lbs Adj. YW: 1214 lbs

EPDs	CE	BW	WW	YW	MCE	Milk
0	1.5	34	51	3	27	

2223673 ACCI 35J 19/01/2021

RED NORTHLINE ROB ROY 122K
RED HALL'S BARRY 040C
RED BLAIRS ELORA 40X

RED WILD ROSE ROBIN HOOD 11F
RED BAR EL SYBIL 122E
RED WHEEL SIN CITY 43T
RED JCC ELORA 71P

RED WHEEL ALLIANCE 83A
RED DUAL-E SAMARIA 3D
RED U6 SAMARIA 3X

RED WHEEL ALLIANCE 22U
RED WHEEL ANN 51S
BLACK WHEEL ODYSSEY 117U
RED U6 SAMARIA 5U

BW: 87 lbs Adj. WW: 611 lbs Adj. YW: 1144 lbs

EPDs	CE	BW	WW	YW	MCE	Milk
0	1.4	41	64	0	26	



Barry 72J



Barry 103J

25 RED ACC *Barry 72J*

2223674 ACCI 72J 27/01/2021

RED NORTHLINE ROB ROY 122K
RED HALL'S BARRY 040C
RED BLAIRS ELORA 40X

RED WILD ROSE ROBIN HOOD 11F
RED BAR EL SYBIL 122E
RED WHEEL SIN CITY 43T
RED JCC ELORA 71P

ACC TIGER 3Z
RED ACC JOANNA 88C
RED ACC JOANNA 30Z

HF TIGER 5T
ANDERSON'S REBA 70X
RED ANDERSON'S MR BEEF 06W
RED ANDERSON'S JOANNA 82U

BW: 94 lbs Adj. WW: 708 lbs Adj. YW: 1281 lbs

EPDs	CE	BW	WW	YW	MCE	Milk
1	1.5	32	57	-1	23	

Barry 72J is a stand out for thickness and rib shape. His dam 88C has raised three exceptional bulls in a row with the first two selling to K3 Ag & Crocus Hills Farms and Tyler Doherty.

26 RED ACC *Barry 103J*

2223675 ACCI 103J 05/02/2021

RED NORTHLINE ROB ROY 122K
RED HALL'S BARRY 040C
RED BLAIRS ELORA 40X

RED WILD ROSE ROBIN HOOD 11F
RED BAR EL SYBIL 122E
RED WHEEL SIN CITY 43T
RED JCC ELORA 71P

RED D-BAR DYNAMO 67Y
RED ACC HEATHER 147D
RED ACC HEATHER 65Z

RED U-2 DYNAMO 7021T
RED D-BAR SOXRO 28S
ANDERSON'S NEXT GENERATION 20U
RED ANDERSON'S HEATHER 76T

BW: 89 lbs Adj. WW: 637 lbs Adj. YW: 1139 lbs

EPDs	CE	BW	WW	YW	MCE	Milk
-2	1.7	31	53	-4	24	

Really complete high quality bull. Dam has raised four bulls in a row with the previous two going to Ray Jerome and Glen Brink.



Chisum 149J



Big Shot 57J

27 RED ACC *Chisum* 149J

2223241 ACCI 149J 17/02/2021

CRESCENT CREEK CHISUM 16Z
ACC CHISUM 120E
RED ANDERSON'S MARY 0119X

ACC TIGER 3Z
RED ACC HEATHER 111C
RED ACC HEATHER 65Z

S CHISUM 6175
KBJ BLACK NANCE 608R
RED TOWARDS 2000 14D
RED LAZY M PINE MARY 6C

HF TIGER 5T 1402252
ANDERSON'S REBA 70X
ANDERSON'S NEXT GENERATION 20U
RED ANDERSON'S HEATHER 76T

BW: 93 lbs Adj. WW: 724 lbs Adj. YW: 1283 lbs

EPDs	CE	BW	WW	YW	MCE	Milk
	0	2	37	67	4	18

Nice dark red herd bull, Maternal brother is Lot 54. Another maternal brother sold to Bryan Hulme.

28 RED ACC *Big Shot* 57J

2210355 ACCI 57J 24/01/2021

RED U-2 MAGNUM 227C
RED ACC BIG SHOT 118E
RED ACC LAMBDA 1Z

RED KBJ SAM'S PROSPECTOR 133Z
RED CRESCENT CREEK ANNIE 15T
RED MEM ICECAP ANNIE 22Z

RED HOWE MAGNUM 169W
RED U-2 LARKABA 209Y
RED BAKERS WILD CARD 814W
RED D-BAR LAMBDA 60X

TLA NORTHERN SAMURAI 627274
KBJ ROUND LASSIE 18T
RED MEM ICEBERG 4W
RED MEM CHINNA 26S

BW: 89 lbs Adj. WW: 684 lbs Adj. YW: 1244 lbs

EPDs	CE	BW	WW	YW	MCE	Milk
	1	2.3	51	85	4	27

Dam has registered 12 progeny and is currently raising her 13th calf.



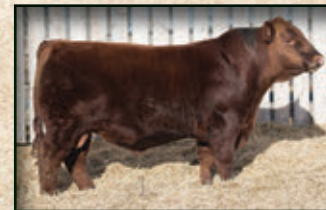
Cannon Fire 61J



RED ACC BIG SHOT 118E | Dam of Lot 28



ACC CHISUM 120E | Sire of Lot 27



RED SHILOH CANNON FIRE 8C | Sire of Lot 29

29 RED ACC *Cannon Fire* 61J

2210356 ACCI 61J 24/01/2021

RED ML HUSTLER 272Z
RED SHILOH CANNON FIRE 8C
RED SHILOH ARCH ANGEL 53A

RED D-BAR CURRENT TREND 9K
RED ANDERSON'S BONITA 71P
RED FBAC BONITA 6F

RED BECKTON HUSTLER T61S
RED ML KARUBA 814U
RED ANCR 16U STATED 47X
RED SHILOH UTTER SURPRISE 20U

RED BRYLOR NEW TREND 22D
RED PLF DUKE JOAN 3526
RED TOWARDS 2000 14D
RED BRYLOR BONITA 10B

BW: 92 lbs Adj. WW: 652 lbs Adj. YW: 1195 lbs

EPDs	CE	BW	WW	YW	MCE	Milk
	-3	3.5	40	69	6	25

High quality performance bull out of a legacy female that has 15 registered progeny. Granddam 6F was also highly prolific with 12 progeny and will show up in a lot of pedigrees at ACC.

30 RED ACC *Pacesetter* 141J

2229064 ACCI 141J 16/02/2021

RED ACC PACESETTER 104E
RED ACC PACESETTER 116G
RED NORDAL 98S ENVY 98X

RED COCKBURN ASSASSIN 624D
RED ACC LAMBDA 169G
RED ACC LAMBDA 1Z

ACC PACESETTER 73B
RED D-BAR VALENTINE 9X
RED BAR DOUBLE M CLASS 125R
RED CRESCENT CREEK MS ENVY 98S

RED PIE SPECIALIST 430
RED COCKBURN CORA 254Z
RED BAKERS WILD CARD 814W
RED D-BAR LAMBDA 60X

BW: 83 lbs Adj. WW: 663 lbs Adj. YW: 1142 lbs



EPDs	CE	BW	WW	YW	MCE	Milk
	-2	2.5	36	60	4	28

Heifer bull out of Lamda 1Z daughter. Lots of thickness and length in a calving ease package.



KNOCKOUT 194J



CRESCENT CREEK QUEEN RUTH 104A
Dam of Lot 31



Maternal Brother 75H

31 ACC *Knockout* 194J

2223267 ACCI 194J 01/03/2021

MUSGRAVE 316 STUNNER
ACC STUNNER 14G
ACC ROSEBUD 103B

LD CAPITALIST 316
MCATL BLACKBIRD
CRESCENT CREEK PACESETTER 128Z
PRAIRIELANE TOTAL ROSEBUD 2101

S CHISUM 0206
CRESCENT CREEK QUEEN RUTH 104A
CRESCENT CREEK QUEEN RUTH 14W

S CHISUM 6175
S VANNA 358
B C C-J C L EMBLAZON 038-287
CRESCENT CREEK QUEEN RUTH 56T

BW: 88 lbs Adj. WW: 877 lbs Adj. YW: 1429 lbs

EPDs	CE	BW	WW	YW	MCE	Milk
	1	2.9	62	95	5	28

This March 1st calf is the youngest bull in the sale and deserves without a doubt to be the leadoff black bull. His brother last year sold to Kembar Farms, Alexander MB. 104A's calf before that was Buckaroo 39G who we kept as a herd bull. Great cows like her just keep cranking them out.

32 ACC *Tazer* 16J

2210325 ACCI 16J 14/01/2021

MUSGRAVE 316 STUNNER
ACC STUNNER 14G
ACC ROSEBUD 103B

LD CAPITALIST 316
MCATL BLACKBIRD
CRESCENT CREEK PACESETTER 128Z
PRAIRIELANE TOTAL ROSEBUD 2101

HF GOLD BUCKLE 92E
ACC ANNIE 3G
ALLEN CROFT ANNIE K 11B

HA COWBOY UP 5405
HF BETTY 51B
HF CONSENSUS 235Y
ANNIE K OF PEAK DOT 555S

BW: 84 lbs Adj. WW: 900 lbs Adj. YW: 1438 lbs

EPDs	CE	BW	WW	YW	MCE	Milk
	3	2.7	68	112	4	27

Tazer 16J is one of the heaviest bulls in the pen with incredible length. He has some set to his hind legs so if you need to correct some straightness your cow herds structure then he's the bull for the job. 84 lb BW to 900 lb WW who doesn't like that.



TAZER 16J



ACC STUNNER 14G
Sire of Lots 32 - 38

33 ACC *Stunner* 54J

2210352 ACCI 54J 23/01/2021

MUSGRAVE 316 STUNNER
ACC STUNNER 14G
ACC ROSEBUD 103B

CRESCENT CREEK CHISUM 16Z
ACC TIBBIE 71C
ACC TIBBIE 117X

LD CAPITALIST 316
MCATL BLACKBIRD
CRESCENT CREEK PACESETTER 128Z
PRAIRIELANE TOTAL ROSEBUD 2101

S CHISUM 6175
KBJ BLACK NANCE 608R
ANDERSON'S WHO'S NEXT 39S
JOST TIBBIE 12P

BW: 96 lbs Adj. WW: 705 lbs Adj. YW: 1251 lbs

EPDs	CE	BW	WW	YW	MCE	Milk
	-2	3.4	64	109	1	24

71C has been a great cow for us, past sale bulls have sold to Kevin Yaworski & Kembar



STUNNER 54J

34 ACC *Shock N Awe* 79J

2223209 ACCI 79J 28/01/2021

MUSGRAVE 316 STUNNER
ACC STUNNER 14G
ACC ROSEBUD 103B

COLEMAN CHARLO 0256
ACC STUMPIE 8E
FIGURE 8 ANGUS STUMPIE 12N

LD CAPITALIST 316
MCATL BLACKBIRD
CRESCENT CREEK PACESETTER 128Z
PRAIRIELANE TOTAL ROSEBUD 2101

O C C PAXTON 730P
BOHI ABIGALE 6014
LOOKOUT PACESETTER 147L
FIGURE 8 ANGUS STUMPIE 112K

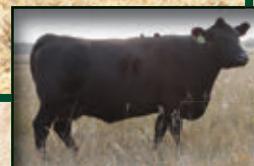
BW: 89 lbs Adj. WW: 806 lbs Adj. YW: 1230 lbs

EPDs	CE	BW	WW	YW	MCE	Milk
	1	1.8	54	90	1	20

Deep sided performance type bull out of a really pretty Charlo daughter. Past sale bulls have sold to Brent Watts and Stephanow Farms.



SHOCK N AWE 79J



ACC STUMPIE 8E | Dam of Lot 34

35 ACC *Stunner* 162J

2223249 ACCI 162J 19/02/2021

MUSGRAVE 316 STUNNER
ACC STUNNER 14G
ACC ROSEBUD 103B

CONNEALY IMPRESSION 89
ACC ANNIE K 75D
ALLEN CROFT ANNIE K 11B

LD CAPITALIST 316
MCATL BLACKBIRD
CRESCENT CREEK PACESETTER 128Z
PRAIRIELANE TOTAL ROSEBUD 2101

CONNEALY IMPRESSION 1525807
REEGAN OF CONANGA 89
HF CONSENSUS 235Y
ANNIE K OF PEAK DOT 555S

BW: 95 lbs Adj. WW: 748 lbs Adj. YW: 1307 lbs

EPDs	CE	BW	WW	YW	MCE	Milk
	2	2	54	92	2	29

Athletic ranch style bull that will cover lots of ground. Really structurally correct and his dam and granddam are both very productive females here. His brothers have sold to Lorne Shevernoha and Greg Ludwig



RESOLTZ 174J

36 ACC *Resoltz* 174J

2223253 ACCI 174J 22/02/2021

MUSGRAVE 316 STUNNER
ACC STUNNER 14G
ACC ROSEBUD 103B

CRESCENT CREEK CHISUM 16Z
ACC TIBBIE 43C
ANDERSON'S TIBBIE 128W

LD CAPITALIST 316
MCATL BLACKBIRD
CRESCENT CREEK PACESETTER 128Z
PRAIRIELANE TOTAL ROSEBUD 2101

S CHISUM 6175
KBJ BLACK NANCE 608R
RED ANDERSON'S DUKE 5M
JOST TIBBIE 12P

BW: 89 lbs Adj. WW: 761 lbs Adj. YW: 1292 lbs

EPDs	CE	BW	WW	YW	MCE	Milk
	0	2.7	58	98	3	20

Similar style bull to lot 35 with a better hair coat. We have kept some daughters out of 43C. We are excited to continue using ACC Stunner 14G we think his progeny have lots of performance and length as you can see from lots 31 -36.

37 ACC Mountain Man 15J

2210324 ACCI 15J 14/01/2021

PAINTROCK MOUNTAIN MAN
PAINTROCK TRAPPER 2065428
EMULOUS OF PAINTROCK 93-9

KESSLERS FRONTMAN R001
ENCHANTRESS OF PR 3635
ISAACS ALLIANCE 7161
PAINTROCK EMULOUS 446-6

HF GOLD BUCKLE 92E
ACC BANDOLIER LASS 91G
KEMBAR BANDOLIER LASS 56E

HA COWBOY UP 5405
HF BETTY 51B
BROOKING PATRIOT 4057
KEMBAR BANDOLIER LASS 57Z

HEIFER RECOMMENDED COWS

BW: 74 lbs Adj. WW: 774 lbs Adj. YW: 1281 lbs

EPDs	CE	BW	WW	YW	MCE	Milk
6	1.2	55	98	6	22	

ACC Mountain Man is a really high quality calving ease sire with lots of hair and thickness. HF Goldbuckle 92E Dam is a really nice young cow that we are excited about.



MOUNTAIN MAN 15J



TRAPLINE 24J

Lot 38 is the most powerful of the three Trapper calves. His 316 Stunner dam is really moderate. He has a large white patch in front of his sack on the one side.

38

ACC Trapline 24J

2210330

ACCI 24J

16/01/2021

PAINTROCK MOUNTAIN MAN
PAINTROCK TRAPPER 2065428
EMULOUS OF PAINTROCK 93-9

KESSLERS FRONTMAN R001
ENCHANTRESS OF PR 3635
ISAACS ALLIANCE 7161
PAINTROCK EMULOUS 446-6

MUSGRAVE 316
ACC ROSEBUD 115G
ACC ROSEBUD 38E

LD CAPITALIST 316
MCATL BLACKBIRD 831-1378
SITZ WISDOM 481T
CRESCENT CREEK ROSEBUD 169R



BW: 81 lbs Adj. WW: 819 lbs Adj. YW: 1434 lbs

EPDs	CE	BW	WW	YW	MCE	Milk
4	0.5	54	97	1	23	

Sale Feature



FRONTIER 39J

39 ACC Frontier 39J

2210342 ACCI 39J 20/01/2021

PAINTROCK MOUNTAIN MAN
PAINTROCK TRAPPER 2065428
EMULOUS OF PAINTROCK 93-9

KESSLERS FRONTMAN R001
ENCHANTRESS OF PR 3635
ISAACS ALLIANCE 7161
PAINTROCK EMULOUS 446-6

HF GOLD BUCKLE 92E
ACC ENID QUALITY 45G
ANGUS VALLEY QUALITY 15D

HA COWBOY UP 5405
HF BETTY 51B
COLE CREEK CEDAR RIDGE 1V
ANGUS VALLEY QUALITY 10B

HEIFER RECOMMENDED COWS

BW: 79 lbs Adj. WW: 774 lbs Adj. YW: 1243 lbs

EPDs	CE	BW	WW	YW	MCE	Milk
6	1.2	55	97	5	23	

Very similar bull calf to Lot 37 as they are both out of Gold Buckle daughters. The two of them would make a great pair breeding a bunch of black replacement heifers.

Lot 40 was one of Chris Poley's top two black bulls. He's thick made and smooth topped. 161F is one of our best young black cows. Her calf last year sold to Shawna Larocque and Scot Sandilands. Could breed heifers or cows.



COWBOY UP 11J

40 ACC *Cowboy Up* 11J

2210322 ACCI 11J **12/01/2021**

HA COWBOY UP 5405
HF GOLD BUCKLE 92E
HF BETTY 51B

HA OUTSIDE 3008
HA BLACKCAP LADY 1602
HF REBEL 53Y
HF BETTY 29N

CRESCENT CREEK PACESETTER 16U
ACC ROSEBUD 161F
PRAIRIELANE DYNA ROSEBUD 1088

LOOKOUT PACESETTER 258M
CRESCENT CREEK STUMPIE 9R
MOHLEN DYNAMITE 1356
PRAIRIELANE EXTRA ROSEBUD 4044



BW: 81 lbs Adj. WW: 743 lbs Adj. YW: 1317 lbs

EPDs	CE	BW	WW	YW	MCE	Milk
6	1.4	49	84	8	18	

Sale Feature

41 ACC *Gold Buckle* 28J

2242946 ACCI 28J **18/01/2021**

HA COWBOY UP 5405
HF GOLD BUCKLE 92E
HF BETTY 51B

HA OUTSIDE 3008
HA BLACKCAP LADY 1602
HF REBEL 53Y
HF BETTY 29N

S CHISUM 6175
CRESCENT CREEK STUMPIE 23A
CRESCENT CREEK STUMPIE 9R

S ALLIANCE 3313
S GLORIA 464
CRESCENT CREEK ALLIANCE 29N
FIGURE 8 ANGUS STUMPIE 12N



BW: 75 lbs Adj. WW: 699 lbs Adj. YW: 1242 lbs

EPDs	CE	BW	WW	YW	MCE	Milk
10	0.4	55	92	12	20	

Here is Finley's first bull in the sale. 75 lbs BW to 699 WW. High quality bull with lots of calving ease. He could breed heifers or cows.



GOLD BUCKLE 28J

42 ACC *Spur* 37J

2210339 ACCI 37J **20/01/2021**

HA COWBOY UP 5405
HF GOLD BUCKLE 92E
HF BETTY 51B

HA OUTSIDE 3008
HA BLACKCAP LADY 1602
HF REBEL 53Y
HF BETTY 29N

BROOKMORE PIONEER 16X
KEMBAR LUCY 36E
KEMBAR LUCY 69T

S A V PIONEER 7301
BROOKMORE RUBY 166U
WINDY WILLOWS BRUNO 44L
KEMBAR LUCY 2M



BW: 88 lbs Adj. WW: 730 lbs Adj. YW: 1273 lbs

EPDs	CE	BW	WW	YW	MCE	Milk
7	2.2	48	85	10	22	

Dam of lot 42 is a really nice cow. We kept a daughter out of her and our heifer bull Stunner 95G. He could breed heifers or cows as the dam brings lots of calving ease to the equation.



SPUR 37J



COWBOY UP 43J

43 ACC *Cowboy Up* 43J

2210343 ACCI 43J 21/01/2021

HA COWBOY UP 5405
HF GOLD BUCKLE 92E
HF BETTY 51B

HA OUTSIDE 3008
HA BLACKCAP LADY 1602
HF REBEL 53Y 1627442
HF BETTY 29N

TC TOTAL 410
PRAIRIELANE TOTAL ROSEBUD 2101
PRAIRIELANE 5103 ROSEBUD 7152

BON VIEW NEW DESIGN 208
TC ERICA EILEEN 2047
PRAIRIELANE KRUGGERAND 5103
PRAIRIELANE 3011 ROSEBUD 5091

BW: 91 lbs Adj. WW: 778 lbs Adj. YW: 1368 lbs

EPDs	CE	BW	WW	YW	MCE	Milk
	-1.5	3.9	63	112	5.5	25

Big time performance bull calf with a 91 lb BW. Cow has been a great producer raising sale bulls that went to Rod Abrahamson, Mitchell and Anne Decosse, Robin Hill Farm and Kevin & Lynn Wenzel. She is also the granddam of our Stunner 14G herd bull.



TOP HAND 64J

44 ACC *Top Hand* 64J

2210358 ACCI 64J 25/01/2021

HF GOLD BUCKLE 92E
ACC BUCKAROO 39G
CRESCENT CREEK QUEEN RUTH 104A

HA COWBOY UP 5405
HF BETTY 51B
S CHISUM 0206
CRESCENT CREEK QUEEN RUTH 14W

BROOKMORE UPWARD 26Z
KEMBAR PRIDETA 47E
KEMBAR PRIDETA 33A

SITZ UPWARD 307R
BROOKMORE KARAMA 24M
EASTONDALE ALLIANCE I87
KEMBAR PRIDETA 66W

BW: 95 lbs Adj. WW: 778 lbs Adj. YW: 1216 lbs

EPDs	CE	BW	WW	YW	MCE	Milk
	1	3.2	49	83	4	21

Recommended for cows



COWBOY UP 67J

45 ACC *Cowboy Up* 67J

2210361 ACCI 67J 26/01/2021

HA COWBOY UP 5405
HF GOLD BUCKLE 92E
HF BETTY 51B

HA OUTSIDE 3008
HA BLACKCAP LADY 1602
HF REBEL 53Y
HF BETTY 29N

FLEURY BARDOLENE 115B
CRESCENT CREEK ROSEBUD 119E
CRESCENT CREEK ROSEBUD 85X

DOUBLE AA BARDOLENE 50'08
DOUBLE AA ANNIE K
CRESCENT CREEK CHIEF 80G
CRESCENT CREEK ROSEBUD 133R

BW: 96 lbs Adj. WW: 811 lbs Adj. YW: 1352 lbs

EPDs	CE	BW	WW	YW	MCE	Milk
	-1	4	55	96	5	20

Recommended for cows

Testimonial from Bruce Rosling

We have purchased 3 bulls sight unseen in the last 6 years and they have met all our expectations and are still breeding in our spring and fall calving programs .

- Bruce Rosling

46 ACC *Stetson* 96J

2223218 ACCI 96J 03/02/2021

HF GOLD BUCKLE 92E
ACC BUCKAROO 39G
CRESCENT CREEK QUEEN RUTH 104A

HA COWBOY UP 5405
HF BETTY 51B
S CHISUM 0206
CRESCENT CREEK QUEEN RUTH 14W

COLEMAN CHARLO 0256
ACC STUMPIE 9E
FIGURE 8 ANGUS STUMPIE 12N

O C C PAXTON 730P
BOHI ABIGALE 6014
LOOKOUT PACESETTER 147L
FIGURE 8 ANGUS STUMPIE 112K

BW: 88 lbs Adj. WW: 695 lbs Adj. YW: 1057 lbs

EPDs	CE	BW	WW	YW	MCE	Milk
4	1.7	52	85	6	20	



Lots of maternal strength in this pedigree. Stumpie 9E has had two daughters and we have kept them both.



STETSON 96J



ACC BUCKAROO 39G | Sire of Lots 46 & 47

47 ACC *Rustler* 115J

2223226 ACCI 115J 09/02/2021

HF GOLD BUCKLE 92E
ACC BUCKAROO 39G
CRESCENT CREEK QUEEN RUTH 104A

HA COWBOY UP 5405
HF BETTY 51B
S CHISUM 0206
CRESCENT CREEK QUEEN RUTH 14W

RR SCOTCHMAN 2999
ACC STUMPIE 3E
FIGURE 8 ANGUS STUMPIE 12N

E X A R SCOTCH CAP 816
ERICA LASSIE OF R R 8464
LOOKOUT PACESETTER 147L
FIGURE 8 ANGUS STUMPIE 112K

BW: 97 lbs Adj. WW: 713 lbs Adj. YW: 1094 lbs

EPDs	CE	BW	WW	YW	MCE	Milk
-2	3.8	56	92	6	19	

Recommended for cows. High quality dam with an old school pedigree. Maternal brother is lot 59.



RUSTLER 115J



ACC STUMPIE 3E | Dam of Lot 47

48 ACC *Platinum* 1J

2210314 ACCI 1J 01/01/2021

HA PRIME CUT 4493
HA STERLING 6170
HA LASS 3309

VERMILION SIRLOIN
HA MISS BLACKCAP 9127
S A V NET WORTH 4200
HA LASS 4206

HF GOLD BUCKLE 92E
ACC QUEEN RUTH 10G
CRESCENT CREEK QUEEN RUTH 104A

HA COWBOY UP 5405
HF BETTY 51B
S CHISUM 0206
CRESCENT CREEK QUEEN RUTH 14W

BW: 75 lbs Adj. WW: 825 lbs Adj. YW: 1338 lbs

EPDs	CE	BW	WW	YW	MCE	Milk
11	1.5	63	106	13	36	



HA Stirling has worked really well on our heifers and makes really nice calving ease bulls. The Granddam of this bull raised lot 31 the lead off black bull.



PLATINUM 1J



HA STERLING 6170 | Sire of Lot 48



MOMENTUM 75J



CRESCENT CREEK MOMENTUM 173D
Sire of Lot 49



MOMENTUM 146J

49 ACC *Momentum* 75J

2223204 ACCI 75J **27/01/2021**

CHAPMAN MEMENTO 3589A
CRESCENT CREEK MOMENTUM 173D
CRESCENT CREEK STUMPIE 9R

CHAPMAN MEMENTO 0505X
CHAPMAN KAWICH LADY 8065U
CRESCENT CREEK ALLIANCE 29N
FIGURE 8 ANGUS STUMPIE 12N

BROOKING PATRIOT 4057
KEMBAR PRIDETA 71E
KEMBAR PRIDETA 116Z

CONNELLY EARNAN 076E
S00 LINE LASS 0400
KEMBAR PEACEMAKER 5U
KEMBAR PRIDETA 16L

BW: 89 lbs Adj. WW: 752 lbs Adj. YW: 1237 lbs

EPDs	CE	BW	WW	YW	MCE	Milk
5	1.8	43	74	8	25	



50 ACC *Momentum* 146J

2223240 ACCI 146J **17/02/2021**

CHAPMAN MEMENTO 3589A
CRESCENT CREEK MOMENTUM 173D
CRESCENT CREEK STUMPIE 9R

CHAPMAN MEMENTO 0505X
CHAPMAN KAWICH LADY 8065U
CRESCENT CREEK ALLIANCE 29N
FIGURE 8 ANGUS STUMPIE 12N

CRESCENT CREEK CHISUM 16Z
ACC TIBBIE 40C
ANDERSON'S TIBBIE 4Y

S CHISUM 6175
KBJ BLACK NANCE 608R
F A R KRUGERRAND 410H
ANDERSON'S TIBBIE 2W

BW: 88 lbs Adj. WW: 721 lbs Adj. YW: 1187 lbs

EPDs	CE	BW	WW	YW	MCE	Milk
4	1.7	38	68	7	21	



MOMENTUM 147J

51 ACC *Momentum* 147J

2223242 ACCI 147J **17/02/2021**

CHAPMAN MEMENTO 3589A
CRESCENT CREEK MOMENTUM 173D
CRESCENT CREEK STUMPIE 9R

CHAPMAN MEMENTO 0505X
CHAPMAN KAWICH LADY 8065U
CRESCENT CREEK ALLIANCE 29N
FIGURE 8 ANGUS STUMPIE 12N

ACC NOZEKA 27C
ACC TIBBIE 90G
ACC TIBBIE 102Z

YOUNG DALE NOZEKA 2Z
ANDERSON'S TIBBIE 105W
ANDERSON'S NEXT GENERATION 20U
RED ANDERSON'S TIBBIE 14X

BW: 85 lbs Adj. WW: 858 lbs Adj. YW: 1416 lbs

EPDs	CE	BW	WW	YW	MCE	Milk
4	1.8	34	58	4	23	



All Canadian Pedigree on this one. Deep sided bull would excel breeding cows or heifers.



STUNNER 161J

52 ACC *Stunner* 161J

2223246 ACCI 161J **19/02/2021**

MUSGRAVE 316 STUNNER
ACC STUNNER 95G
KEMBAR LUCY 36E

LD CAPITALIST 316
MCATL BLACKBIRD
BROOKMORE PIONEER 16X
KEMBAR LUCY 69T

HF GOLD BUCKLE 92E
ACC STUNNER 88G
ACC STUMPIE 10E

HA COWBOY UP 5405
HF BETTY 51B
RR SCOTCHMAN 2999
FIGURE 8 ANGUS STUMPIE 12N

BW: 84 lbs Adj. WW: 738 lbs Adj. YW: 1259 lbs

EPDs	CE	BW	WW	YW	MCE	Milk
3	2.6	46	82	7	22	



Really stout wide topped heifer bull. Sired by our heifer bull Stunner 95G who is built very much the same way.

Two Year Old Bulls



CREEDO 43H

RED WHEEL CREED 214C | Sire of Lot 53



RECKONING 62H

53 RED ACC *Creed* 43H

2173870 ACCI 43H 28/01/2020

RED WHEEL CREED 171A
RED WHEEL CREED 214C
BLACK WHEEL JESTRESS 1Y

DMM CREED 75W
RED WHEEL BRIDGET 16R
RED SVR KNIGHT 73P
158W

RED BAKERS WILD CARD 814W
RED ACC LAMBDA 1Z
RED D-BAR LAMBDA 60X

RED BCAR WILD CARD
RED BAR-V MISS EBBEE 50E
RED U-2 DYNAMO 7021T
RED KORAN LAMBDA 127L

BW: 102 lbs Adj. WW: 652 lbs Adj. YW: 1188 lbs

EPDs	CE	BW	WW	YW	MCE	Milk
	-4.5	5.0	41	71	1.5	32

Powerful Red Creed 214C son to lead off the Two Year Old division. These bulls will add pounds at weaning but still smooth made as to calve easily on mature cows.

54 RED ACC *Reckoning* 62H

2173735 ACCI 62H 29/01/2020

RED U-2 RECON 192Y
RED U-2 RECKONING 149A
RED U-2 ANEXA 271Y

RED BRYLOR WEST JET 69W
RED U-2 LARKABA 8133U
RED HOWE MAGNUM 169W
RED U-2 ANEXA 333N

RED BAKERS WILD CARD 814W
RED ACC LAMBDA 1Z
RED D-BAR LAMBDA 60X

RED BCAR WILD CARD
RED BAR-V MISS EBBEE 50E
RED U-2 DYNAMO 7021T
RED KORAN LAMBDA 127L

BW: 102 lbs Adj. WW: 711 lbs Adj. YW: 1300 lbs

EPDs	CE	BW	WW	YW	MCE	Milk
	-4	4.5	41	77	1	28

Recommended for cows.



CHISUM 80H

ACC CHISUM 120E
Sire of Lots 55 - 57

55 RED ACC *Chisum* 80H

2160208 ACCI 80H 01/02/2020

CRESCENT CREEK CHISUM 16Z
ACC CHISUM 120E
RED ANDERSON'S MARY 0119X

S CHISUM 6175
KBJ BLACK NANCE 608R
RED TOWARDS 2000 14D
RED LAZY M PINE MARY 6C

RED U-2 MAGNUM 227C
RED ACC JOANNA 42E
RED ANDERSON'S JOANNA 11T

RED HOWE MAGNUM 169W
RED U-2 LARKABA 209Y
RED ANDERSON'S DUKE 5M
RED ACF JOANNA 22M

BW: 104 lbs Adj. WW: 779 lbs Adj. YW: 1387 lbs

EPDs	CE	BW	WW	YW	MCE	Milk
	-9	5.2	54	102	-2	19

Chisums are built long and calve easy. Would you rather your cows calve have a 100 lb snake or a 60 lb brick. We have never had any calving issues with this sire group.



CHISUM 204H

56 RED ACC *Chisum* 204H

2173665 ACCI 204H 14/03/2020

CRESCENT CREEK CHISUM 16Z
ACC CHISUM 120E
RED ANDERSON'S MARY 0119X

S CHISUM 6175
KBJ BLACK NANCE 608R
RED TOWARDS 2000 14D
RED LAZY M PINE MARY 6C

ACC TIGER 3Z
RED ACC HEATHER 111C
RED ACC HEATHER 65Z

HF TIGER 5T
ANDERSON'S REBA 70X
ANDERSON'S NEXT GENERATION 20U
RED ANDERSON'S HEATHER 76T

BW: 98 lbs Adj. WW: 792 lbs Adj. YW: 1355 lbs

EPDs	CE	BW	WW	YW	MCE	Milk
	-2	2.9	43	79	3	18

Recommended for cows. 111C is one of Bruce's favourite cows. Maternal brother is lot 27.



CHISUM 128H

57 RED ACC *Chisum* 128H

2162270 ACCI 128H 12/02/2020

CRESCENT CREEK CHISUM 16Z
ACC CHISUM 120E
RED ANDERSON'S MARY 0119X

S CHISUM 6175
KBJ BLACK NANCE 608R
RED TOWARDS 2000 14D
RED LAZY M PINE MARY 6C

RED ANDERSONS CURVE BENDER 10R
RED ANDERSON'S HEATHER 76T
ANDERSON'S HEATHER 4H

RED D-BAR CURVE BENDER 28J
RED ACF JOANNA 17K
ANDERSON'S TAILOR MADE 10E
RED RUSTY CR HEATHER 11Z

BW: 86 lbs Adj. WW: 636 lbs Adj. YW: 1173 lbs

EPDs	CE	BW	WW	YW	MCE	Milk
	-2	2.7	28	53	7	19

This bull has the most calving ease of all the two year olds. 76T is a wonderful old cow with 13 registered progeny including bulls selling to Ken Chernoff, Bridgeway Livestock, 4 Eggie Farms and Grass River Stock Farms.



DUPLICATE 71H

58 ACC *Duplicate* 71H

2158774 ACCI 71H 31/01/2020

YOUNG DALE XCALIBER 32X
YOUNG DALE DUPLICATE 137D
YOUNG DALE PRIDE 97T

YOUNG DALE KNOCK OUT 134U
BROOKMORE TIBBIE 222T
YOUNG DALE EL DORADO 11R
YOUNG DALE PRIDE 40G

MOHNEN PULSE 533
JPD BLACKCAP 22D
JPD BLACKCAP 13Y

MOHNEN HEARTRATE 1751
MOHNEN JILT 2360
TJF FREEDOM 172U
J P D BLACKCAP 4U

BW: 102 lbs Adj. WW: 628 lbs Adj. YW: 1226 lbs

EPDs	CE	BW	WW	YW	MCE	Milk
	-11	6.4	43	86	-5	19

Recommended for Cows.



DUPLICATE 149H

59 ACC *Duplicate* 149H

2162287 ACCI 149H 20/02/2020

YOUNG DALE XCALIBER 32X
YOUNG DALE DUPLICATE 137D
YOUNG DALE PRIDE 97T

YOUNG DALE KNOCK OUT 134U
BROOKMORE TIBBIE 222T
YOUNG DALE EL DORADO 11R
YOUNG DALE PRIDE 40G

RR SCOTCHMAN 2999
ACC STUMPIE 3E
FIGURE 8 ANGUS STUMPIE 12N

E X A R SCOTCH CAP 816
ERICA LASSIE OF R R 8464
LOOKOUT PACESETTER 147L
FIGURE 8 ANGUS STUMPIE 112K

BW: 106 lbs Adj. WW: 713 lbs Adj. YW: 1313 lbs

EPDs	CE	BW	WW	YW	MCE	Milk
	-15	7.9	49	91	-3	16

Recommended for Cows. Maternal brother is lot 47.



DUPLICATE 179H

60 ACC *Duplicate* 179H

2173656 ACCI 179H 06/03/2020

YOUNG DALE XCALIBER 32X
YOUNG DALE DUPLICATE 137D
YOUNG DALE PRIDE 97T

YOUNG DALE KNOCK OUT 134U
BROOKMORE TIBBIE 222T
YOUNG DALE EL DORADO 11R
YOUNG DALE PRIDE 40G

RR SCOTCHMAN 2999
ACC STUMPIE 10E
FIGURE 8 ANGUS STUMPIE 12N

E X A R SCOTCH CAP 816
ERICA LASSIE OF R R 8464
LOOKOUT PACESETTER 147L
FIGURE 8 ANGUS STUMPIE 112K

BW: 97 lbs Adj. WW: 760 lbs Adj. YW: 1312 lbs

EPDs	CE	BW	WW	YW	MCE	Milk
	-10	6.1	50	87	1	15

Very similar bull to lot 59. Recommended for cows. Made really smooth so calving will not be a concern. Both lot 59 & 60 go back to Stumpie 12N who is Katie's foundation cow and a great Angus Female.



61 25 Commercial Red and Black Angus Cow/Calf Pairs

Commercial pairs that really reflect the traits that we desire in our purebred females. With January, February and March calves at side these pairs make a great investment opportunity to take advantage of a strong market this fall. All females have good udders and will showcase our commitment to structural correctness from the ground up. All the females in the sale are vaccinated with Bovishield Gold and Tasvax. Calves will have received Enforce at birth and their first dose of Bovishield and Ultracab.

TERMS & CONDITIONS

TERMS: The terms of the sale are cash or cheque, payable at par at the sale location. The right of property shall not pass until after settlement has been made; no invoicing on buyers in attendance unless previous arrangements have been made. Each animal sells to the highest bidder and in cases of disputes, the auctioneer's decision will be final. Current exchange rates will be announced sale day. All monies are in Canadian funds.

CERTIFICATE OF REGISTRATION: Each animal will carry papers issued by the Canadian Angus Association. A certificate of registry duly transferred will be furnished to the buyer for each animal after payment has been made.

PEDIGREE ESTIMATES: Pedigree Estimates (PE) are created on the projected mating of the animal's sire and dam based on averages of the two, creating estimated values that do not hold the same accuracy of actual EPDs issued from the association and should be used as such.

GUARANTEE: Each animal becomes the purchaser's risk immediately after the animal is sold. All animals in this sale will be sold under the terms and guarantees set forth by the Canadian Angus Association with regard to health, freedom from defects and from both reproductive and specific genetic unsoundness.

LIABILITIES: All persons attend the sale at their own risk. The seller, facility owner and sale manager assume no liability, legal or otherwise, for any accidents that occur. It is understood that T Bar C Cattle Co. (2013) Ltd. is acting only as a medium between buyer and seller and is not responsible for any obligations to collect or enforce collection of any monies between parties and any legal action that may, in extreme cases, be taken must be between buyer and seller. T Bar C Cattle Co. (2013) Ltd. assumes no responsibility of any credit extended by the seller to the buyer. The buyer must look to the seller for fulfillment of all guarantees and representations made hereunder.

PHONE, MAIL & WIRE BIDS: Bidders unable to attend the sale may phone, wire or mail their bids and instructions to the sale manager, auctioneer or special representatives. Bids must be received in sufficient time prior to the sale.

INSURANCE: We strongly recommend that insurance is purchased for full value.

ERRORS: All announcements at sale time, written or oral, supercede any written material in the catalogue.

CATTLE INSPECTION: All carry permanent identity tags, corresponding to Sale Lot Numbers as well as Canadian Cattle Identification Tags.

HEALTH: The bulls offered for the sale have been vaccinated in June and October with Bovi Shield Gold and Ultrabac. All bulls were treated for external and internal parasites and will receive the initial dose of Fusoguard (foot rot vaccine).

DELIVERY: Please speak to us about arranging delivery or deduct \$50 from the purchase price, if you take your bull home sale day. Any bulls remaining at the farm must be insured and after May 1 will be kept at a cost of \$3/day.

ANDERSON CATTLE CO. RESERVES THE RIGHT TO DRAW 100 STRAWS OF SEMEN ON ANY BULLS IN THE SALE FOR THEIR IN HERD USE AT YOUR CONVENIENCE AND OUR EXPENSE.

We are proud to support the **Canadian Angus Foundation 15 for 50 Program**

With YOUR help we will continue to further the Foundation's mission and the breed.

15%
of a lot
means
a lot...

In 2019 over \$80,000 was **INVESTED** in member education, awards, bursaries and youth scholarships.

\$180,000 invested in **ANGUS** research over the last three years leveraged an additional \$360,000 in grant funding.

\$60,000+ has been invested in history and archives, including the 2019 Canadian Angus history book.

If you are interested in giving back or learning more about this new initiative, please contact Belinda Wagner, Canadian Angus Foundation Executive Director at 306-757-6133 or email bwagner@cdnangus.ca. You can also visit the Canadian Angus Foundation website at www.cdnangus.ca/foundation/.



The Canadian Angus Foundation functions to preserve and expand the Angus breed for future generations through education, youth development, scientific and market research, and historical preservation and restoration. The Canadian Angus Foundation was incorporated in 1993 and is the charitable arm of the Canadian Angus Association. Donations are tax deductible.

Return Undeliverable
Canadian Addresses To:

T Bar C Cattle Co. Ltd.
Box 2330
Warman, SK S0K 4S0



ANDERSON
CATTLE CO.

Created By:
Today's
Publishing